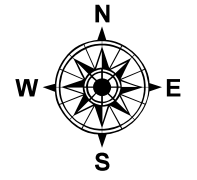


BYLAW 600

Chair

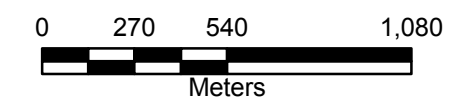
Corporate Officer

"Rural Forest" designation continues to cover remainder of Plan Area shown on Map 1.



- OCB Boundary
- Land Parcels
- Streams
- Agricultural A
- Agricultural B
- Rural Forest
- Rural
- Rural Residential
- Residential A
- Residential B
- Residential C
- Residential D
- Mobile Home Park
- Commercial Industrial Mixed Use
- Tourist Commercial
- Park
- Public Recreation Use
- Institutional
- Comprehensive Development Cluster Housing Areas

Policies under:
OCP Section B-3.1.3 apply to CDCHA Nos. 1, 2, 3 & 4
OCP Section B-8.4.5 & B-8.4.6 apply to CDCHA Nos. 2 & 5
OCP Section B-8.5.5 & B-8.5.6 apply to CDCHA No. 6

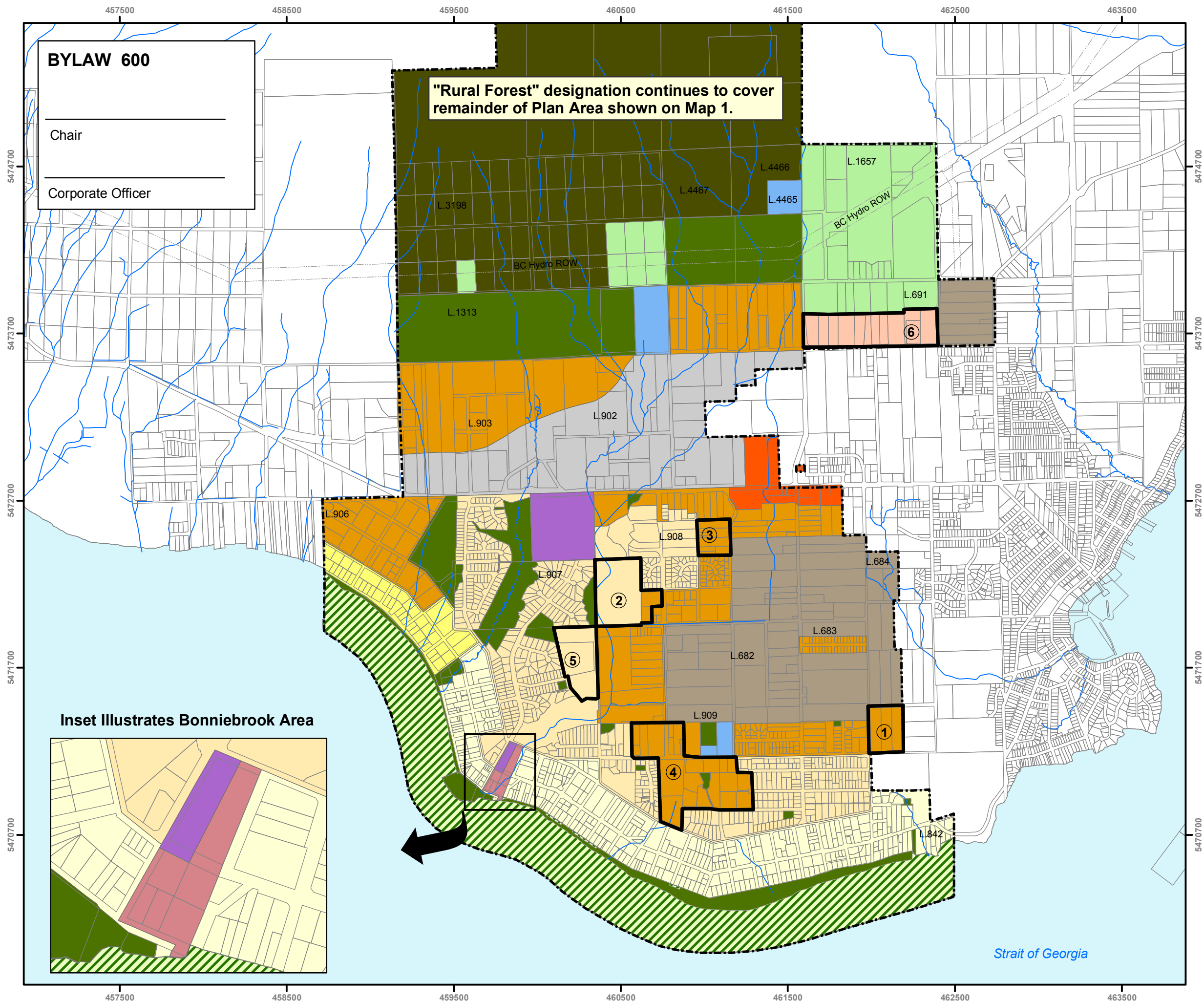


Scale 1:22,000
UTM Zone 10, NAD 83



Sunshine Coast Regional District
**Elphinstone Official
Community Plan**

MAP 3 Land Use Designations



Inset Illustrates Bonniebrook Area

Strait of Georgia